

Twin Tuner Fuel Injection Controller for 2001-2008 Twin-Cam

Features

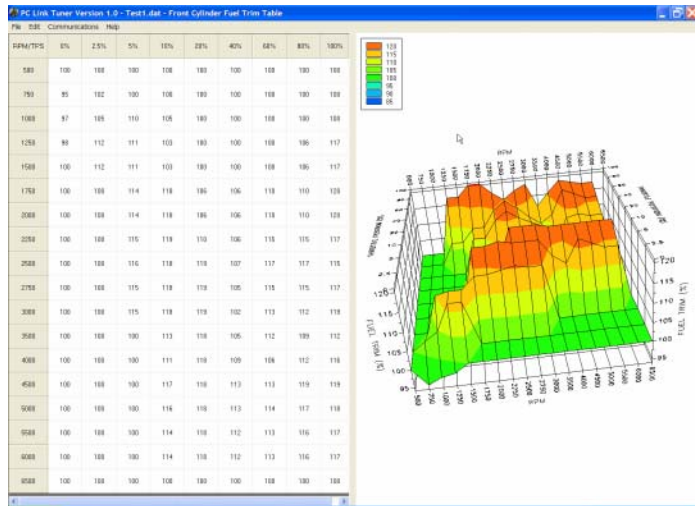
- Increased horsepower
- Improved throttle response
- Easy plug-in installation and setup
- Very compact size – only 4”L x 2”W x ½”H
- Can use Dynojet Power Commander maps
- Compatible with Twin Scan II+ Tuning Aid
- Low cost

The Twin Tuner allows you to easily adjust your fuel injection to match the requirements of performance parts including camshafts, free flowing exhausts, and low restriction air filters. You can add or subtract fuel.

Installation takes only 10-15 minutes and is very easy, with no splicing, cutting, crimping, or bulky interconnections. All access is at the Delphi® ECM. Just remove five wires from the ECM connector, insert these wires into our small mating connector, insert five new wires from the Twin Tuner into the ECM connector, and connect one ground wire. The unit is completely encapsulated and impervious to moisture. With a very low profile of only ½” and occupying a fraction of the space required by competitive products, you won’t have a problem finding a place to mount the unit.

You can use the mode and up/down pushbutton switches to make fuel trim adjustments in the RPM and throttle position ranges required by most applications. The fuel trim value is displayed on a bright daylight readable LED display.

The Twin Tuner also has an advanced mode, where you can use the optional USB Interface and PC Link Tuner software to make precise fuel adjustments. The PC Link Tuner software uses the same RPM rows and throttle position columns as the Dynojet Power Commander. If you have created Dynojet Power Commander files for your



applications, you can enter the same values into our tables. You can make independent adjustments to the front and rear cylinders.

The Twin Tuner works great in combination with the Twin Scan II+ tuning aid. You don’t need a dyno for precise tuning. All you have to do is install the Twin Scan II+ and ride the bike around some. You can then copy the air/fuel ratio corrections calculated by the Twin Scan II+ into the PC Link Tuner software. For complete details, please visit the Twin Tuner section on our website.

Part Number	Description	Suggested Retail
TWIN-TUNER	Twin Tuner fuel injection controller (for 2001-2008 Twin-Cam with 36 pin Delphi® system). Not legal for sale or use on pollution controlled vehicles.	\$199.00
USB-INTF	USB Interface (provides USB connectivity for custom mapping. Includes 6 foot USB cable and Windows drivers on CDROM)	\$99.95