



Twin Tec

User Instructions for USB Interface

**CAUTION: CAREFULLY READ INSTRUCTIONS BEFORE PROCEEDING.
NOT LEGAL FOR USE OR SALE ON POLLUTION CONTROLLED VEHICLES.**

INTRODUCTION

The Twin Tec USB Interface P/N USB-INTF provides PC connectivity for all of our engine controls (ignition and fuel injection systems) and eliminates the requirement for multiple cables and a separate USB adapter. The USB Interface is compatible with Windows ME/2000/XP/Vista.

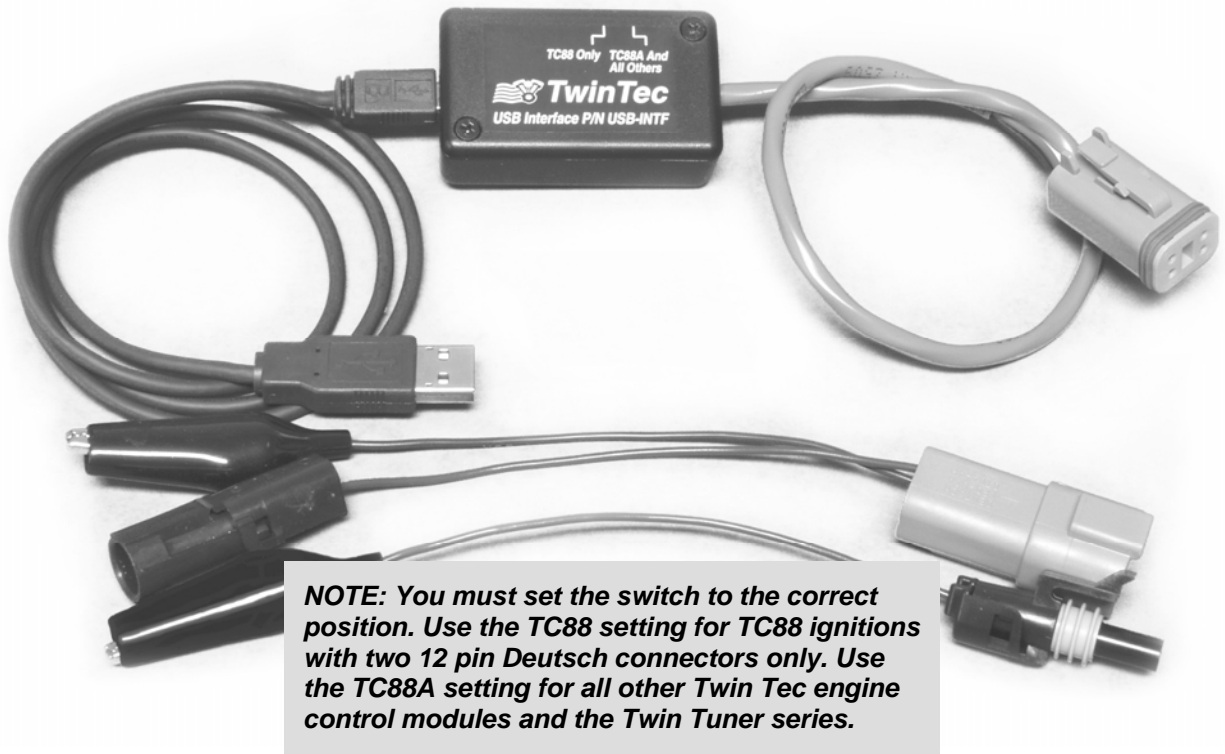
The USB Interface has a switch that selects the operating mode. One position is used for the TC88 ignition and the second position is used for all of our other engine control products. The unit comes with a connector that mates with the four terminal Deutsch data link connector found on 1999 and later H-D® Twin-Cam models. Adapters for connection to our Model 1005-1007 ignitions and the Twin Tuner series are included with some versions of the USB interface.

Please note that the USB Interface is not compatible with Daytona Sensors Twin Scan 88 and WEGO II systems. These units have a 9 pin D-Sub connector and require a separate USB adapter, such as our P/N USBG-232 for USB connectivity.

INSTALLATION

The Twin Tec USB interface is based on the FTDI FT232R chip and drivers that allow the unit to emulate a standard Windows RS-232 COM port. Updated Windows drivers, installation instructions and troubleshooting tips are available on the FTDI website at www.ftdichip.com. Additional information and troubleshooting tips can be found on the PC Link Tech FAQ on our website at www.daytona-twintec.com.

Figure 1 – Twin Tec USB Interface with Adapters



A new USB driver that simplifies the installation process is available. This installs as an executable file, similar to other Windows programs. The Windows Found New Hardware Wizard will then detect the USB device when it is first connected and automatically install the correct driver without the user having to browse out to the CDROM.

Before proceeding with installation, shutdown any other applications that may be running. For Windows Vista, you must disable the User Account Control (UAC) during installation. If you are not familiar with the UAC, please refer to the Vista UAC Tech Note on our website's PC Link Tech FAQ for details.

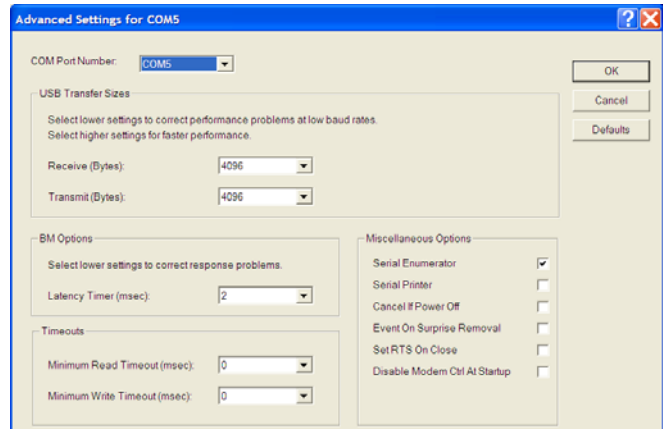
1. Make sure your USB interface is not connected to your PC.
2. Insert the Twin Tec CDROM. When the Twin Tec autorun menu appears, click on Software. Scroll down and click on the USB Driver link. When the File Download dialog box appears, click on "Run this program from its current location." Ignore any security warnings and click on Yes to continue.
3. After installation of the driver is complete, connect the USB interface to the PC with the supplied USB cable. The Windows Found New Hardware Wizard will appear and complete installation of the USB interface.

COM PORT CONFIGURATION

After completing the installation steps outlined above, you must configure the new COM port using Device Manager.

1. Click Start, Settings, Control Panel, System, Hardware, and then Device Manager. Scroll down to Ports (COM and LPT).
2. The new USB Interface will appear as USB Serial Port. Click on this new port.
3. Click on the Port Settings tab.
4. Click on Advanced. In most cases the wizard will have installed your new USB Interface as COM5. Note the COM port number assigned for your system. For optimum performance, you should also change the BM Options Latency Timer to 2 msec as shown in Figure 2.
5. Once you have configured a COM port number for your new unit, make sure that you use this same COM port selection in the Twin Tec software by using the Port Setup command from the Communications menu.

Figure 2 – COM Port Configuration



OPERATION

For all 1999 and later Twin-Cam models, the USB Interface plugs into the four terminal Deutsch data link connector found on H-D[®] wiring harness. Some applications, such as TC88A ignitions, require installation of communications jumper wire. Refer to the Twin Tec module installation instructions for details. **Use the TC88 switch setting for TC88 ignitions with two 12 pin Deutsch connectors only. Use the TC88A switch setting for all other Twin Tec engine control modules and the Twin Tuner series.**

For Evolution[®] and Shovelhead[®] ignition modules (Models 1005-1007), an adapter harness is supplied with the USB Interface. Connect the alligator clip on the black wire to ground and the Packard Weather Pack connector to the tach wire from the module. If the tach wire is not equipped with a Weather Pack connector, you can use the brown jumper wire with an alligator clip to make the required connection.

The same adapter harness is also used for the Twin Tuner. Connect the alligator clip on the black wire to ground and the Packard Weather Pack connector to the mating connector on the brown wire from the Twin Tuner.