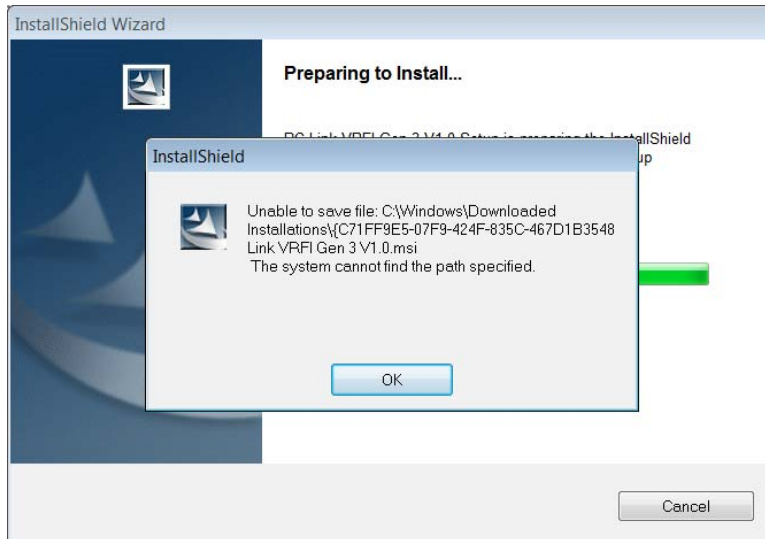


# Installing Daytona Twin Tec/Daytona Sensors Software on Windows 7

When downloading programs from our website for installation on Windows 7, InstallShield may display an error message as shown below.



Click on OK to continue. The next screen that appears allows you to select a suitable location for the temporary installation file. Select a folder associated with your user account and click on OK to continue the installation process.

